

Product Guide



Tubing



Stainless Steel
316/316L dual
1/8" - 2" Sizes Range
.028" - .188" Thickness Range

Pots



Stainless Steel
316/316L dual
SCH 40 & 80
Sizes: 2", 3" & 4"
Made in Mexico

Tube Fittings



MALE CONNECTOR



MALE ELBOW



FEMALE CONNECTOR



UNION



UNION ELBOW



CAP



PLUG



NUT



FEMALE RUN TEE



FEMALE BRANCH TEE



UNION TEE



BRANCH TEE



RUN TEE



FERRULE SET

Gauges



IN-LINE Check Valves



1/8" - 1" Sizes Range
Brass & SS Material
MxF & FxF Ends

Needle Valves

NS/NC



Delrin Seat (6000 PSI)
Metal Seat (10000 PSI)
FxF / MxF - NPT & OD Ends
NACE MR - 0175
Sizes: 1/4" - 1"

NBC/NBS



Blees Type
Delrin Seat (6000 PSI)
MxF - NPT Ends
NACE MR - 0175
Sizes: 1/4" - 1"

NAC/NAS



Angle Type
Metal Seat (1000 PSI)
MxF - NPT Ends
NACE MR - 0175
Sizes: 1/4" - 3/4"

NMC/NMS



Mini Type
Delrin Seat (6000 PSI)
MxF - NPT Ends
NACE MR - 0175
Sizes: 1/4"

NPC/NPS



Multi-port Type
Delrin Seat (6000 PSI)
Metal Seat (10000 PSI)
MxF - NPT Ends
NACE MR - 0175
Sizes: 1/2"

2S



2 - Valve
Metal Seat (6000 PSI)
MxF - NPT Ends
Vent: 1/4"
NACE MR - 0175
Sizes: 1/2"

3S



3-Valve
Metal Seat (6000 PSI)
Pipe - Flanged
NACE MR - 0175
Sizes: 1/2"

5S



5-Valve
Metal Seat (6000 PSI)
Pipe - Flanged
NACE MR - 0175
Sizes: 1/2"

Hammer Unions

FIG.100 THRD



FIG.200 & 206 THRD



FIG. 200 & 206 BW



FIG. 400 THRD



FIG. 602 THRD



FIG. 602 BW



FIG. 1002 THRD



FIG.1002 BW



FIG. 1502 THRD



FIG. 1502 BW



Expansion Joint

BUNA-NBR
GALVANIZED C.S. FLANGES
Class: 150
Sizes: 2" - 24"



Ring Joint



Stainless/Carbon Steel
R, RG & BX Types
Oval & Octagonal

Carbon & Stainless Steel Pipes

Material: CS, SS304L & SS316L
 Types: Welded, Helicoidal Weld & Seamless
 Schedule: 10 THRU XXS
 Sizes: 1/4" - 60"



Flanges



Carbon Steel

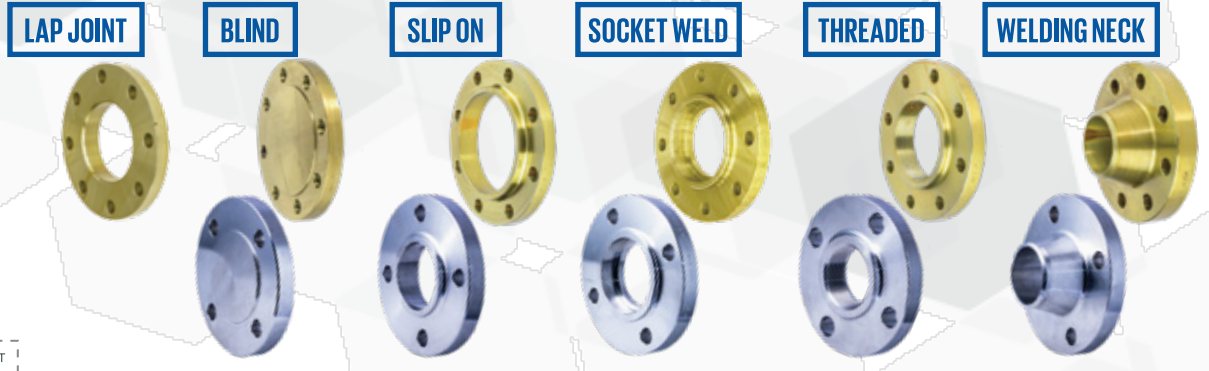
ANSI/ ASME B16.5
 Forged Steel SA/A-105N
 NACE MR - 0175

Stainless Steel

Forged Steel A-182 Gr. 304/304L
 Forged Steel A-182 Gr. 316/316L

Class: 150/300/600/900/1500/2,500
 Sizes: 1/2" - 54"

*REDUCING FLANGES AVAILABLE UNDER REQUEST



Forged Fittings 3000 / 6000 PSI



BW Fittings

Cast Fittings 150PSI/ Nipples



Ball Valves

FLANGED END



Fig. 5112FF/ 5312FF/ 5612FF



Fig. 5112TF/ 5312TF/ 5612TF

A-216 WCB Body
Full Port
API 6D / API 608
NACE MR - 0175
316SS TRIM
ASME B16.10/B16.5
Sizes: 1" - 12"

FLOATING & TRUNNION TYPES

2010CR



2000 PSI Reduced Port
Forged Steel
NACE MR - 0175
ASME B1.20.1
API 598
1 PC Body
Sizes: 1/4" - 2"
NPT / SW Ends

1010 SERIES

Stainless/Carbon Steel
1000 PSI Reduced Port
NACE MR - 0175
ASME B1.20.1
API 598
1 PC Body
Sizes: 1/4" - 2"
NPT / SW Ends



1020 SERIES

Stainless/Carbon Steel
1000 PSI Full Port
NACE MR - 0175
ASME B1.20.1
API 598
2 PC Body
Sizes: 1/4" - 4"
NPT / SW Ends



1030 SERIES

Stainless/Carbon Steel
1000 PSI Full Port
NACE MR - 0175
ASME B1.20.1
API 598
3 PC Body
Sizes: 1/4" - 4"
NPT / SW Ends



1530 SERIES

Stainless/Carbon Steel
1500 PSI Standard Port
NACE MR - 0175
ASME B1.20.1
API 598
3 PC Body
Sizes: 1/4" - 2"



2020 SERIES

Stainless/Carbon Steel
2000 PSI Full Port
NACE MR - 0175
ASME B1.20.1
API 598
2 PC Body
Sizes: 1/4" - 2"
NPT / SW Ends



3020 SERIES

Stainless/Carbon Steel
3000 PSI Full Port
NACE MR - 0175
ASME B1.20.1
API 598 / API 607
2 PC Body
Sizes: 1/4" - 2"
NPT / SW Ends



6020 SERIES

Stainless/Carbon Steel
6000 PSI Full Port
NACE MR - 0175
ASME B1.20.1
API 598 / API 607
2 PC Body
Sizes: 1/4" - 11/2" Full Port
2" Reduced Port
NPT / SW Ends



Cast Steel Valves

GATE VALVE



Fig. 1118F / 1318 F / 1618F

Cast Steel A-216 Gr. WCB
API 600
API TRIM 8
ASME B16.34
RF Ends
Class: 150 / 300 / 600
Sizes: 2" - 24"

CHECK VALVE



Fig. 2118F / 2318 F / 2618F

Cast Steel A-216 Gr. WCB
BS 1868
API TRIM 8
ASME B16.34
RF Ends
Class: 150 / 300 / 600
Sizes: 2" - 24"

GLOBE VALVE



Fig. 3118F / 3318F / 3618F

Cast Steel A-216 Gr. WCB
API 623 (BS 1873)
API TRIM 8
ASME B16.34
RF Ends
Class: 150 / 300 / 600
Sizes: 2" - 12"

SS Cast Steel Valves



GATE VALVE
 ASTM A-351 Gr.CF8M
 API TRIM 10
 ASME B16.34
 Class: 150 / 300
 Sizes: 2" - 12"

Fig. 1131F / 1331F



CHECK VALVE
 ASTM A-351 Gr.CF8M
 API TRIM 10
 ASME B16.34
 Class: 150 / 300
 Sizes: 1" - 12"

Fig. 2131F / 2331F



GLOBE VALVE
 ASTM A-351 Gr.CF8M
 API TRIM 10
 ASME B16.34
 Class: 150 / 300
 Sizes: 2" - 12"

Fig. 3131F / 3331F

Single & Dual Disc Check Valves

CV44M-CS/CV 44M-SS

Wafer - Dual Disc
 Stainless/Carbon Steel
 Class: 300
 Sizes: 2" - 48"



CV42M-CS/CV 42M-SS

Wafer & Lug Type Dual Disc
 Stainless/Carbon Steel
 Class: 150
 Sizes: 2" - 48"



CV32M-CS/CV32T-SS

Wafer -Swing
 Stainless/Carbon Steel
 Class: 150
 Sizes: 2" - 12"



CV31B-DI

Wafer -Swing
 Ductile Iron
 Class: 150
 Sizes: 2" - 12"



CV41B-DI

Wafer -Swing
 Ductile Iron
 Class: 150
 Sizes: 2" - 12"



Butterfly Valves

200 PSI CLASS 125/150

*GEAR OPERATOR AVAILABLE FROM 1"

4111W



Wafer Type
 Ductil Iron Body
 Buna Seat
 Zinc Plated Ductil Iron Disc
 Sizes: 2" - 36"

4112W



Wafer Type
 Ductil Iron Body
 Buna Seat
 Stainless Steel CF8M Disc
 Sizes: 1" - 36"

4111L



Lug Type
 Ductil Iron Body
 Buna Seat
 Zinc Plated Ductil Iron Disc
 Sizes: 2" - 36"

4112L



Lug Type
 Ductil Iron Body
 Buna Seat
 Stainless Steel CF8M Disc
 Sizes: 1" - 36"

Cast Iron Valves



CHECK VALVE
 MSS SP-70
 Cast Iron
 ASTM A-216 Gr.B
 FF Ends
 Class: 125
 Sizes: 2" - 12"
 Fig. 244BR



NRS GATE VALVE
 MSS SP-70
 Cast Iron
 ASTM A-216 Gr.B
 FF Ends
 Class: 125
 Sizes: 2" - 12"
 Fig. 644BR



OS&Y GATE VALVE
 MSS SP-70
 Cast Iron
 ASTM A-216 Gr.B
 FF Ends
 Class: 125
 Sizes: 2" - 12"
 Fig. 144BR



GLOBE VALVE
 MSS SP-70
 Cast Iron
 ASTM A-216 Gr.B
 FF Ends
 Class: 125
 Sizes: 2" - 12"
 Fig. 344BR

Y-Strainers

ST12

Ductile Iron Body
SS Screen
NPT Ends
Class: 300
Sizes: 1/4" - 3"



ST80T SERIES

WCB & CF8M Body
SS Screen
NPT Ends
800 WOG
Sizes: 1/4" - 4"



ST58

Ductile Iron Body
SS Screen
FF Ends
Class: 125
Sizes: 2" - 24"



ST 61 SERIES

WCB & CF8M Body
SS Screen
RF Ends
Class: 150
Sizes: 1" - 24"



ST 62 SERIES

WCB & CF8M Body
SS Screen
RF Ends
Class: 300
Sizes: 2" - 12"



Forged Steel Valves

API 602
NACE MR-0175
Forged Steel A-105N/TRIM 8
Forged Steel A-182 Gr. F316L/TRIM 10
NPT / SW Ends
Class: 800
Sizes: 1/4" - 2"

GATE VALVE



Fig. 1828T / 1831T

CHECK VALVE



Fig. 2828T / 2831T

GLOBE VALVE



Fig. 3828T / 3831T

Oil Field Valves

BDT SERIES

1000/2000 PSI
Ductile Iron Body
Stainless Steel Ball
NACE MR - 0175
1" Full Port
2" - 4" Reduced Port



FIG. BDT1/BDT2

BCT SERIES

3000/5000 PSI
Carbon Steel Body
Stainless Steel Ball
NACE MR - 0175
2" Reduced Port



FIG. BCT3/BCT5

CCT SERIES

3600 - 5000 PSI
Carbon Steel Swing Check
CF8M Disc Viton Seat
NACE MR - 0175
Sizes: 1" & 2"



FIG. CCT3 / CCT5

CDT SERIES

2000 PSI
Ductile Iron Swing Check
CF8M Disc Viton Seat
NACE MR - 0175
Sizes: 1", 2", 3" & 4"



FIG. CDT2

Gaskets



CG & CGI

ASME B16.20
Stainless Steel 304L & 316L
Filler Graphite
Class: 150 / 300 / 600
Sizes: 1/2" - 36"

Studs



B7P SERIES

Carbon Steel A-193 Gr.B7 & A-194 Gr.2H
Zinc plated coating
Diameters: 1/2" - 1 7/8"
Length: 2 1/2" - 15 1/2"

Backing Rings



BRCS

Carbon Steel SA/A-105
ANSI B16.50
Class: 125 / 150
Sizes: 2" - 24"

Basket Strainers



BS 25-CI / BS 25F-CI



Quick - Open Cover
Sizes: 3/8" - 3" (Threaded)
Class: 125
Sizes: 1" - 8" (Flanged)

BS 65-CI



Flanged Bolted Cover
Class: 125
Sizes: 2" - 12"

BS 35 SERIES



Threaded / Socket Weld
Class: 150 / 300
Sizes: 3/8" - 3"

BS 85 SERIES



Flanged Bolted Cover
Class: 150
Sizes: 2" - 12"

Check Valves



CV 80-SS



Stainless Steel Body
Threaded End
Class: 300
Sizes: 1/4" - 3"

CV 50-DI



Ductile Iron Body
Flanged & Threaded End
Class: 150 / 300
Sizes: 3/4" - 36"

CV 51 SERIES



Carbon & Stainless Steel Body
Flanged End
Class: 150
Sizes: 2" - 24"

CV 52 SERIES



Carbon & Stainless Steel Body
Flanged End
Class: 300
Sizes: 2" - 24"

Grooved Fittings



ASME



Standard:
ASTM A-536
Housing Material:
Ductile Iron
Gr.65-45-12
Nuts & Bolts Material:
Conform to ASTM A-183
& Plated to ASTM B-633
Sizes: 3/4" - 36"

Std. Rigid Coupling



Std. Flexible Coupling



HDPE-to-steel transition coupling



Reducing Coupling



High Pressure Coupling



Flange Adapter



Flexible Coupling



Flange Adapter Niple



Lateral 45°



True Wye



3D Elbow



3R Elbow



90° Elbow



45° Elbow



22.5° Elbow



Standard Tee



Reducing Tee



End Cap



Eccentric Reducer



Concentric Reducer



Butterfly Valves

SERIE 3A



SERIE 36



SERIE 30 / 31



SERIE 40 - 45



SERIE 20 / 21

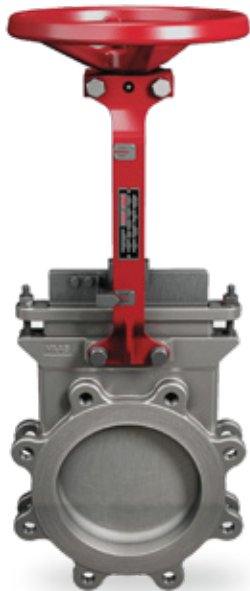


Knife Gate Valves

SERIE 767



SERIE 740



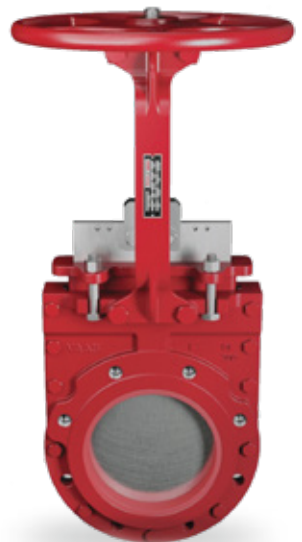
SERIE 765



SERIE 940

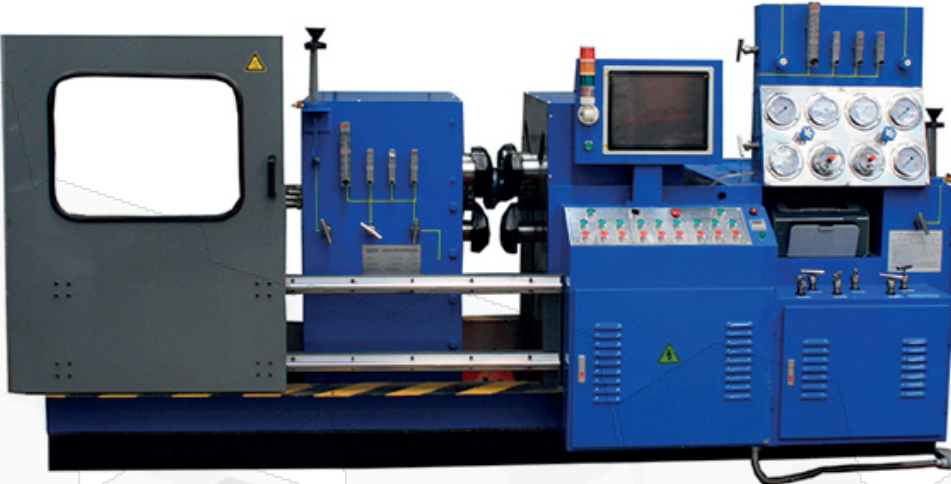


SERIE 752



Testing Department

ATM VALVULAS believes every customer is important, which is why we decide to offer a plus service to our collaborators. We acquired a first class brand new test machine to assess the quality of the valves we supply to the different industries. It is able to test flanged valves ANSI class 150, 300 & 600 in a size range from 2" through 12" diameter. Every valve evaluated will have its respective report and warranty ready for delivery to our Customer.



VALVE TEST REPORT														
DATE: 2018-0-27 11:18:32						NO: 2018027-1039								
VALVE TYPE		BALL VALVE	END NO	CLASS	CLASSIFICATION	SIZE	END TYPE	PLANT	DATE OF TEST	TESTER				
SIZE		2"	CUSTOMER		PROJECT			SHALL	PROJECT	ATM 088				
TEST ITEM	Method	Start Pressure(MPa)	End Pressure(MPa)	Start	End	Start	End	Start	End	Start	End	Start	End	
SHALL TEST	WATER	0.0	0.0	0	0	0	0	0	0	0	0	0	0	
LEFT SEAL TEST	WATER	0.0	0.0	0	0	0	0	0	0	0	0	0	0	
RIGHT SEAL TEST	WATER	0.0	0.0	0	0	0	0	0	0	0	0	0	0	
AIR TEST	AIR	0.0	0.0	0	0	0	0	0	0	0	0	0	0	
AIR TEST	N2	0.0	0.0	0	0	0	0	0	0	0	0	0	0	

1		2		3		4		5		6	
SHALL TEST		LEFT SEAL		LEFT SEAL TEST		RIGHT SEAL TEST		AIR TEST		AIR TEST	

Taller B. PABIAN Check B. ROBERTO Approved: ALEX Stamp: -

Machining Center

Contamos con maquinas **RANURADAS MARCA** 

Para tuberías de 1" a 36" en sistemas por deformación OGS y AGS y sistemas de corte por desvaste.



VE26
Roll Grooving
-Field Manual



VE450FSD
Roll Grooving
-Field Fabrication



VG28GD
Cut Grooving
-Field Fabrication



VG824
Cut Groover



Mule II
Accessories
-Power Drive

Misión

Ofrece soluciones para suministros industriales. Comercializamos todo tipo de válvulas, tuberías, conexiones y accesorios. Ofrecemos marcas de prestigio mundial, alto nivel de inventarios, excelentes precios y entregas oportunas.

Ventajas

- Servicio a toda la república mexicana
- Atención personalizada
- Entrega de material de importación en tiempo record
- Equipo propio de transporte
- Departamento de pruebas
- Centro de maquinado



Contacto

ATM VALVULAS S.A. DE C.V.

✉ ventas@atmvalvulas.com

📍 **Monterrey Nuevo León**

🌐 www.atmvalvulas.com

☎ **(81) 8376-1100**